

CERTIFIED LAND CORNER RECORDATION

COUNTY 5 PM 1 26

DESCRIPTION OF CORNER EVIDENCE FOUND, AND ORIGINAL RECORD (If known)
 Found granite stone 6" x 10" projecting 10" above ground with 1/4 plainly marked on West face and firmly set.

1/4
 S.4 S.3
 T.13N., R.64W.
 6th P.M.

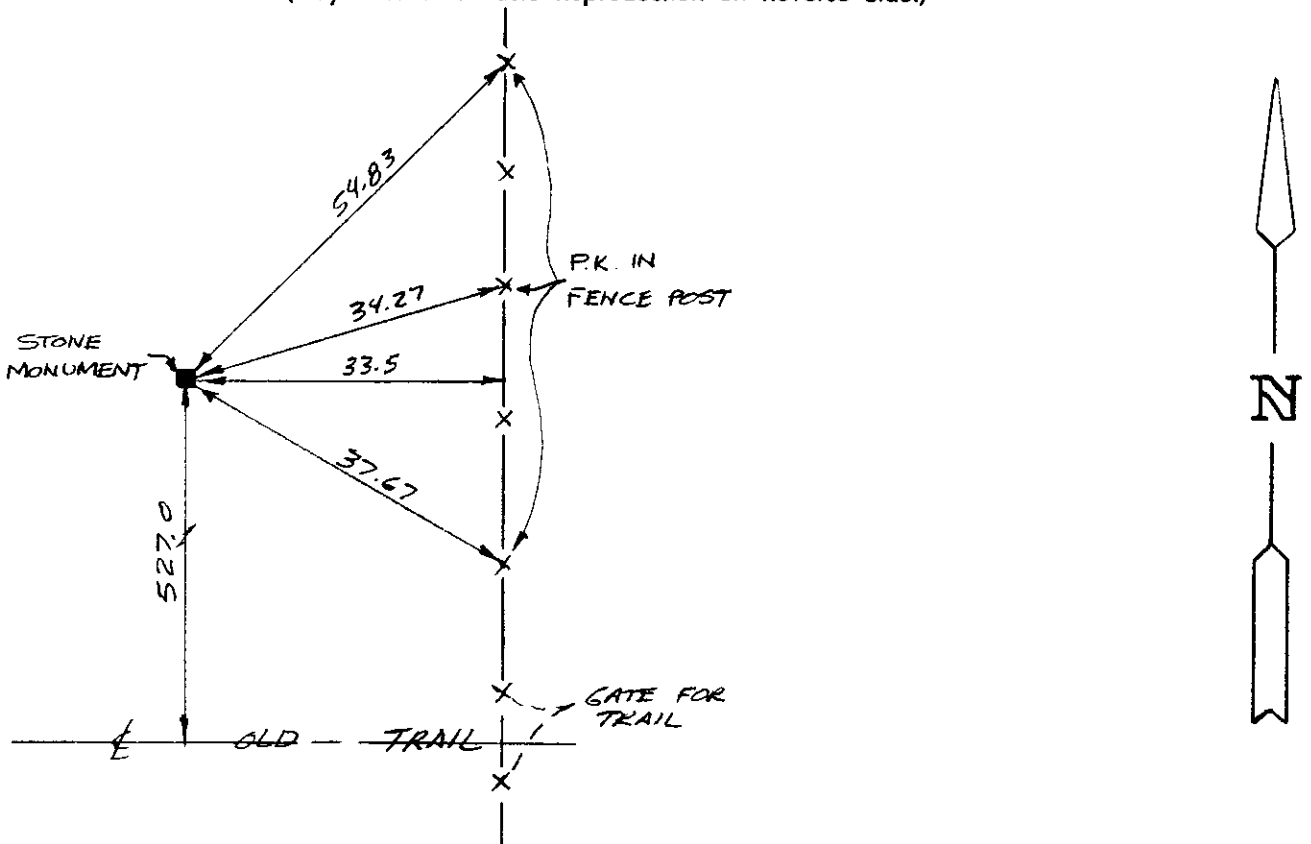
G.L.O. Record - Granite boulder 18" x 11" x 7" - Edwin James & Alfred M. Rogers, Deputy Surveyors, June 6, 1871.

DESCRIPTION OF MONUMENT AND ACCESSORIES ESTABLISHED TO PERPETUATE THE ORIGINAL LOCATION OF THIS CORNER:

At the corner: Not remonumented.

Accessories : See ties below.

SKETCH, WITH COURSE AND DISTANCE TO ADJACENT CORNER IF DETERMINED IN THIS SURVEY.
 (May Sketch or Paste Reproduction on Reverse Side.)



I, John A. Steil certify that I have carefully performed or reviewed the work done on the diagrammed corner as reported on this recordation form and approve the same.

John A. Steil
 Signature of Surveyor

L.S. 2500
 Registration No.

STATE OF WYOMING,
 Office of Clerk and Recorder,
 County of Laramie

This "corner record" was filed for record on the 5th day of May, 1988, was noted on the cross-index plat and is assigned page No. 1963, in book No. 1259.

James C. Whitehead
 County Official

Cross Index No.	<u>C-13</u>	T.	<u>13N</u>	R.	<u>64W</u>	Mer.	<u>6th</u>
		T.		R.		Mer.	
		T.		R.		Mer.	
		T.		R.		Mer.	
		T.		R.		Mer.	
		T.		R.		Mer.	
		T.		R.		Mer.	